

## CERTIFICATE of ANALYSIS (COA)

COMMON NAME	Chamomile, Cape - Wild
LATIN NAME	<i>Eriosephalus punctulatus</i>
COUNTRY OF ORIGIN	South Africa
CULTIVATION METHOD	Conventional, Organically Grown
TYPE	Essential Oil
EXTRACTION METHOD	Steam Distilled
PLANT PART	Flowers
USE	Aromatherapy, Natural Perfumery

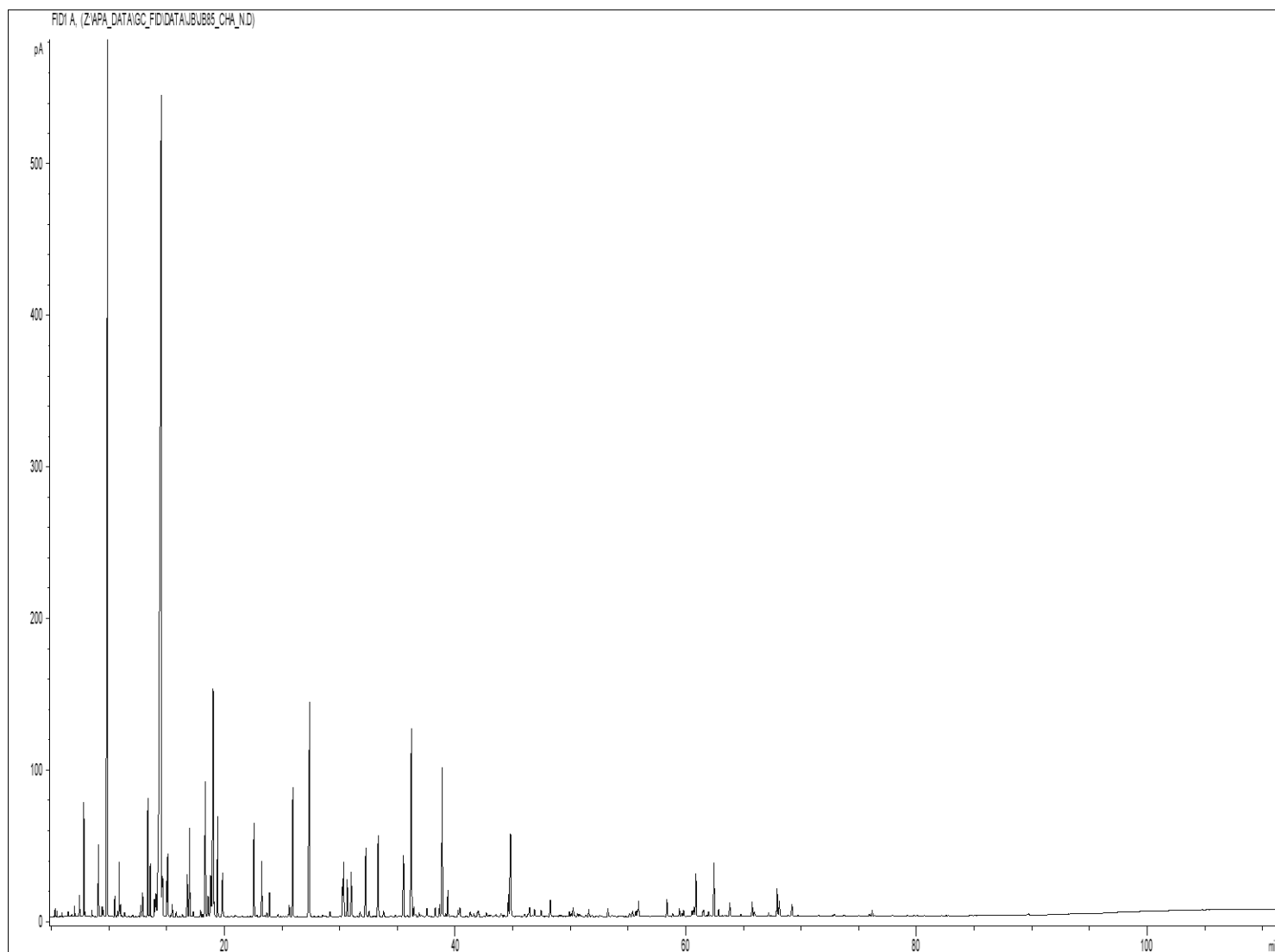
SKU	203
LOT #	00
MANUFACTURING DATE	August 2022
RETEST	August 2025

	SPECIFICATIONS (Range)	
SPECIFIC GRAVITY @20°C	na	na
REFRACTIVE INDEX @20°C	na	1.4281
OPTICAL ROTATION @20°C	na	na

PHYSICAL APPEARANCE	Transparent liquid	Conforms
COLOR	Light to dark blue	Conforms
ODOR	Fruity/floral with herbaceous notes	Conforms
SOLUBILITY	Soluble in alcohol and fixed oils	
SPECIAL USE INSTRUCTIONS	Dilute before use. Refrigerate to preserve freshness.	

# THIRD PARTY LAB ANALYSIS (GCMS)

CHROMATOGRAPHIC PROFILE:



- CHAMOMILE CAPE EO - SKU 203 LOT 5 -

Peaks	RT (min)	Compound name	%	Standard (%)	Allergens (%)
1	5.31	2-BUTENAL	0.07		
2	5.48	CYCLOPENTANE ISOMER	0.04		
3	5.94	2-BUTANONE, 3-METHYL-	0.03		
4	6.46	ETHYL 2-METHYL-PROPIONATE	0.05		
5	7.01	ALIPHATIC KETONE	0.09		
6	7.42	ISOBUTYL ACETATE	0.20		
7	7.43	TRICYCLENE	0.03		
8	7.80	alpha-PINENE	1.04		
9	7.88	alpha-THUYENE	0.06		
10	8.52	PROPYL ISOBUTYRATE	0.06		
11	9.07	CAMPHENE	0.77		
12	9.40	ISOBUTYL PROPIONATE	0.11		
13	9.48	HEXANAL	0.10		
14	9.86	<b>ISOBUTYL ISOBUTYRATE</b>	<b>14.48</b>		
15	10.49	beta-PINENE	0.22		
16	10.73	ALIPHATIC ESTER	0.06		
17	10.88	2-METHYL1-BUTYL ACETATE	0.62		
18	10.98	SABINENE	0.13		
19	11.34	p-MENTH-2-ENE	0.05		
20	12.74	beta-MYRCENE	0.15		
21	12.90	ISOBUTYL METHACRYLATE	0.21		
22	12.91	alpha-PHELLANDRENE	0.13		
23	13.36	ISOBUTYL 2-METHYLBUTYRATE	1.70		
24	13.57	alpha-TERPINENE	0.69		
25	13.92	2-METHYLPROPYL 2-METHYLBUTYRATE	0.28		
26	14.06	ISOAMYL PROPIONATE	0.54		
27	14.50	ISOAMYL ISOBUTYRATE	0.72		
28	14.52	<b>2-METHYLBUTYL ISOBUTYRATE</b>	<b>25.75</b>		
29	14.58	LIMONENE	0.44		0.44
30	14.64	SESQUITERPENE	0.44		
31	15.00	1,8-CINEOLE	0.48		
32		beta-PHELLANDRENE			
33	15.09	cis-ARBUSCULON	0.77		
34	15.48	ALIPHATIC ESTER	0.17		
35	15.82	ETHYL DIMETHYLACRYLATE	0.06		
36	16.35	cis-beta-OCIMENE	0.04		
37	16.78	trans-ARBUSCULON	0.57		
38	16.98	gamma-TERPINENE	1.17		
39	17.29	trans-beta-OCIMENE	0.07		
40	17.93	2-HEPTANOL ACETATE	0.11		
41	18.09	ALIPHATIC ESTER	0.03		
42	18.34	p-CYMENE	1.96		
43	18.58	ALIPHATIC ESTER	0.31		

Peaks	RT (min)	Compound name	%	Standard (%)	Allergens (%)
44	18.80	ISOAMYL 2-METHYLBUTYRATE	0.83		
45	19.02	<b>2-METHYLBUTYL 2-METHYLBUTYRATE</b>	<b>4.28</b>		
46	19.09	TERPINOLENE	0.23		
47	19.44	ISOBUTYL ANGELATE	1.42		
48	19.86	ISOAMYL ISOVALERATE	0.68		
49	20.92	ALIPHATIC ESTER	0.03		
50	22.59	2-NONANONE	1.40		
51	22.83	ALIPHATIC KETONE	0.03		
52	23.25	ALIPHATIC ESTER	0.82		
53	23.53	OCTYL ACETATE	0.03		
54	23.69	HEXYL ANGELATE	0.06		
55	23.93	3,7-DIMETHYL OCTYL ACETATE	0.35		
56	24.66	LACTONE COMPOUND	0.05		
57	25.64	2-METHYLBUTYL ANGELATE	0.21		
58	25.95	ISOAMYL ANGELATE	2.16		
59	27.40	<b>7-METHYL-2-OCTYL ACETATE</b>	<b>4.60</b>		
60	28.52	alpha-p-DIMETHYLSTYRENE	0.03		
61	29.16	ALIPHATIC KETONE	0.11		
62	30.26	METHYLOCTYL ACETATE ISOMER	0.59		
63	30.36	ISOBUTYL TIGLATE	0.87		
64	30.66	NERYL OXIDE	0.60		
65	31.01	ALIPHATIC ALCOHOL	0.89		
66	31.78	ALIPHATIC KETONE	0.12		
67	32.27	alpha-COPAENE	1.22		
68	32.55	LONGICYCLENE	0.11		
69	33.34	CAMPHOR	1.47		
70	33.82	2-NONANOL	0.12		
71	34.84	alpha-ISOCOMENE	0.04		
72	35.54	LINALOOL	1.14		1.14
73	35.89	ISOPINOCAMPHONE	0.03		
74	36.23	<b>LINALYL ACETATE</b>	<b>3.61</b>		
75	36.44	trans-p-MENTH-2-EN-1-OL	0.20		
76	36.61	PINOCARVONE	0.06		
77	36.90	SESQUITERPENE	0.08		
78	37.09	ALIPHATIC ESTER	0.05		
79	37.57	BORNYL ACETATE	0.18		
80	38.30	beta-ELEMENE	0.16		
81	38.67	beta-CARYOPHYLLENE	0.22		
82	38.91	<b>TERPINENE-4-OL</b>	<b>2.70</b>		
83	39.21	AROMADENDRENE	0.06		
84	39.39	HOTRIENOL	0.43		
85	40.24	MENTHATRIENIC COMPOUND	0.11		
86	40.41	cis-p-MENTH-2-EN-1-OL	0.18		

Peaks	RT (min)	Compound name	%	Standard (%)	Allergens (%)
87	41.31	ALIPHATIC ESTER	0.10		
88	41.62	ALLO-AROMADENDRENE	0.05		
89	41.96	Trans-PINOCARVEOL	0.10		
90	42.03	ALIPHATIC ESTER	0.10		
91	42.71	LACTONE LAVANDE	0.08		
92	43.14	trans-p-MENTHA-2,8-DIEN-1-OL	0.03		
93	43.50	cis-PIPERITOL	0.05		
94	43.98	COMPOUND Mw=220	0.06		
95	44.07	gamma-MUUROLENE	0.03		
96	44.24	SESQUITERPENE	0.03		
97	44.61	alpha-TERPINEOL	0.37		
98	44.79	BORNEOL	1.87		
99	46.01	beta-SELINENE	0.06		
100	46.33	PIPERITONE	0.05		
101	46.45	NERYL ACETATE	0.19		
102	46.72	alpha-SELINENE	0.04		
103	46.88	BICYCLOGERMACRENE	0.15		
104	47.45	trans-PIPERITOL	0.13		
105	47.84	trans-ISOPIPERITENOL	0.03		
106	48.25	GERANYL ACETATE	0.31		
107	48.25	delta-CADINENE	0.03		
108	49.02	ALIPHATIC COMPOUND	0.04		
109	49.16	SESQUITERPENE Mw=202	0.04		
110	49.90	COMPOUND Mw=206	0.10		
111	50.07	MYRTENOL	0.07		
112	50.23	COMPOUND Mw=206	0.17		
113	50.34	trans-p-MENTHA-1(7),8-DIEN-2-OL	0.04		
114	50.61	NEROL	0.06		
115	50.76	ALIPHATIC ESTER	0.07		
116	51.35	2-PHENYLETHYL ACETATE	0.03		
117	51.59	COMPOUND Mw=206	0.13		
118	51.87	COMPOUND Mw=190	0.04		
119	52.24	3,5,7-OCTATRIENE-2-OL, E,E-2,6-DIMETHYL-	0.03		
120	52.51	COMPOUND Mw=150	0.04		
121	53.25	GERANIOL	0.17		0.17
122	53.59	ALIPHATIC ESTER	0.05		
123	55.11	PHENYLMETHYL BUTYRATE	0.07		
124	55.39	COMPOUND Mw=236	0.13		
125	55.65	2-METHYLPROPYL BENZENE ACETATE	0.09		
126	55.80	ALIPHATIC ESTER	0.08		
127	55.90	ALIPHATIC ESTER	0.25		
128	58.37	ALIPHATIC ALCOHOL	0.32		
129	58.86	AROMATIC COMPOUND Mw=140	0.06		

Peaks	RT (min)	Compound name	%	Standard (%)	Allergens (%)
130	59.44	3,7-OCTADIENE-2,6-DIOL, 2,6-DIMETHYL-	0.14		
131	59.66	DAVANONE ISOMER	0.06		
132	59.81	LACINIATA FURANONE ISOMER	0.12		
133	60.52	DAVANONE ISOMER	0.12		
134	60.71	CARYOPHYLLENE OXIDE	0.23		
135	60.88	ARTEDOUGLASIA OXIDE C	0.77		
136	61.53	LACINIATA FURANONE ISOMER	0.18		
137	61.97	LACINIATA FURANONE ISOMER	0.09		
138	62.43	ARTEDOUGLASIA OXIDE A	0.98		
139	62.83	LACINIATA FURANONE ISOMER	0.13		
140	63.17	SESQUITERPENOL	0.03		
141	63.36	SESQUITERPENIC OXIDE	0.03		
142	63.81	LACINIATA FURANONE ISOMER	0.29		
143		COMPOUND Mw=218			
144	64.78	ISODAVANONE	0.05		
145	65.75	ARTEDOUGLASIA OXIDE ISOMER	0.26		
146	65.94	VIRIDIFLOROL	0.12		
147	67.17	CUMINOL	0.07		
148	67.91	SPATHULENOL	0.51		
149	68.10	ARTEDOUGLASIA OXIDE ISOMER	0.32		
150	68.87	SESQUITERPENIC OXIDE	0.04		
151	69.19	beta-COPAEN-4-alpha-OL	0.31		
152	69.73	EUGENOL	0.03		0.03
153	71.50	COMPOUND Mw=218	0.03		
154	72.87	alpha-NOOTKATOL	0.06		
155	73.73	SESQUITERPENOL	0.03		
156	75.92	CARYOPHYLLADIENOL ISOMER	0.06		
157	76.18	CARYOPHYLLA-2,6-DIEN-5-alpha-OL	0.12		
158	79.81	SESQUITERPENIC OXIDE	0.03		
		<b>TOTAL</b>	<b>98.66</b>		<b>1.77</b>

This Essential Oil is a 100% pure and natural product. It does not contain any artificial ingredients or adulteration of any kind to the best of our knowledge. The analysis and statements herein constitute the most complete information available to Original Swiss Aromatics. This product is guaranteed by Original Swiss Aromatics to be of excellent quality.